

PRODUCT :: **Moisture Management Tester**

U S A G E :: **Fabric Moisture Management**

B E N E F I T :: **Quick Quantitative Determination of Fabric  
Moisture Management Properties**



- :: Quality control in fabric and garment manufacturing
- :: Research & development of new functional fabrics and garments
- :: Classification of fabrics according to dynamic liquid transport properties
- :: Ranking of apparel fabrics by comfort factors related to moisture management



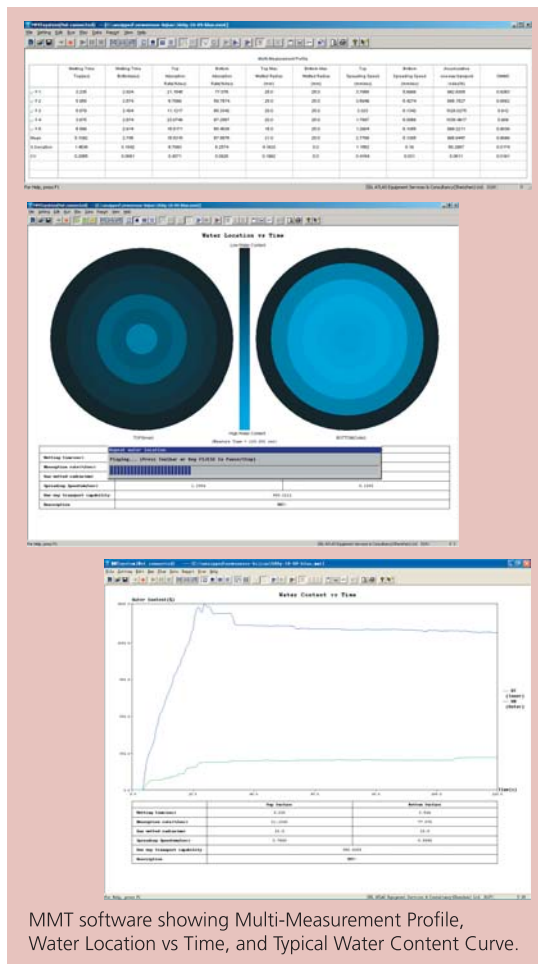
# Moisture Management Tester

Fabric liquid moisture transport properties in multi-dimensions, called moisture management properties, influence the human perception of moisture sensations. To improve the comfort of today's clothing, especially in sportswear, it is important to know the liquid moisture management properties. Although some test methods exist for evaluating absorbency, wicking and strike-through time, existing standards are unable to measure the behavior of liquid transfer in clothing materials dynamically.

The Moisture Management Tester (MMT) was developed to measure dynamic liquid transport properties of knit and woven fabrics in three dimensions:

1. Absorption Rate—Moisture absorbing time of the fabric's inner and outer surfaces
2. One-Way Transportation Capability—One-way transfer from fabric's inner surface to outer surface
3. Spreading/Drying Rate—Speed of liquid moisture spreading on fabric's inner and outer surfaces

MMT consists of upper and lower concentric moisture sensors. The specimen is held flat under fixed pressure between the sensors while standard test solution is introduced onto the top surface of the fabric. Electrical resistance changes between the upper and lower sensors are then recorded dynamically on computer.



MMT software showing Multi-Measurement Profile, Water Location vs Time, and Typical Water Content Curve.

MMT permits the measurement of the following indexes:

- Wetting Time Top/Bottom (WTt/WTb)
- Maximum Absorption Rate Top/Bottom (MAt/MAb)
- Maximum Wetted Radius Top/Bottom (MWRt/MWRb)
- Spreading Speed Top/Bottom (SSt/SSb)
- Accumulative One-Way Transport Capacity (OWTC)
- Overall Moisture Management Capacity (OMMC)

## Specifications

**Test Methods:** AATCC, ISO, SN (Drafting)

**Weight:** 4.7 kg 10.3 lb

**Dimensions:** 21 W x 25 H x 32 D cm  
8.27 W x 9.96 H x 12.60 D inches

**Electrical Supply:** Single Phase 110/220 volts  
60/50 Hz 5 amps

**US Pat No:** Patent Applied For

**Trademark:** MMT™ is a trademark of SDL Atlas

## SDL Atlas

SDL Atlas is the world's leading supplier of textile testing equipment and solutions, providing instrumentation, installation, calibration, training, support and service through a network of distributors, agents and service centers in over 100 countries. The company reflects the combined resources of SDL International, Atlas Textile Test Products, Raitech and Textile Innovators. Wherever people test textiles, you'll find SDL Atlas.

:: Wherever people test textiles you'll find SDL Atlas

(US) T: +1 (803) 329-2110 F: +1 (803) 329-2133 E: info@sdlatlas.com

(UK) T: +44 (0) 161 480 8485 F: +44 (0) 161 480 8580 E: test@sdlatlas.com

(China) T: +852 2173 8611 F: +852 2370 2949 E: info@sdlatlas.com.cn



Solutions by SDL Atlas: Instrumentation. Installation. Calibration. Training. Support. Service. Distributors, Agents and Service Centers in Over 100 Countries.

[www.sdlatlas.com](http://www.sdlatlas.com)